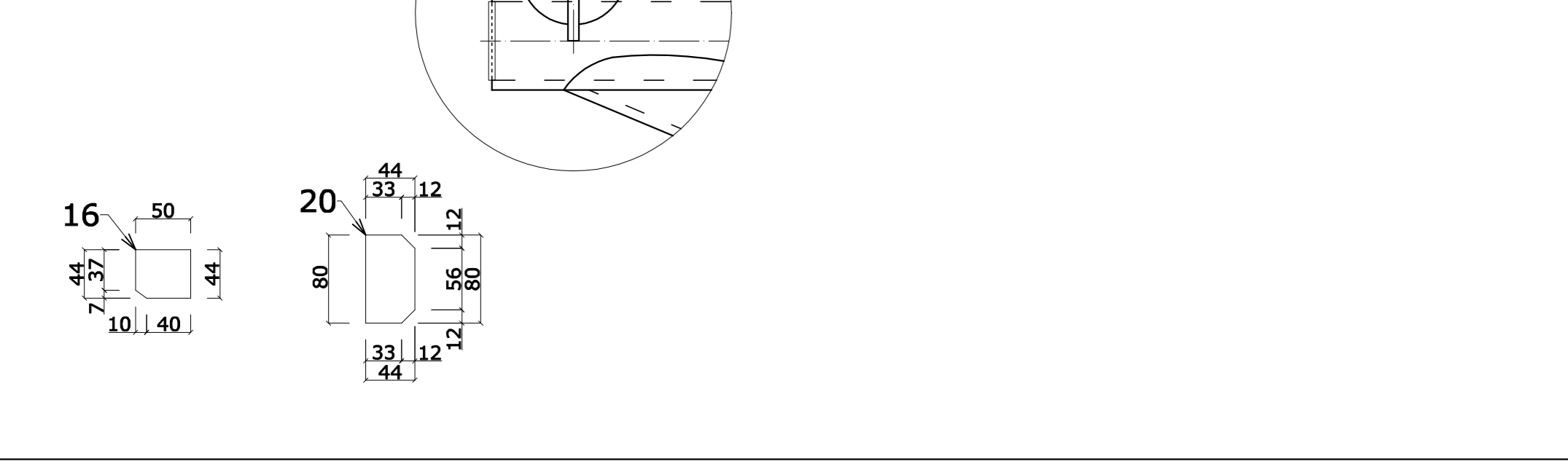
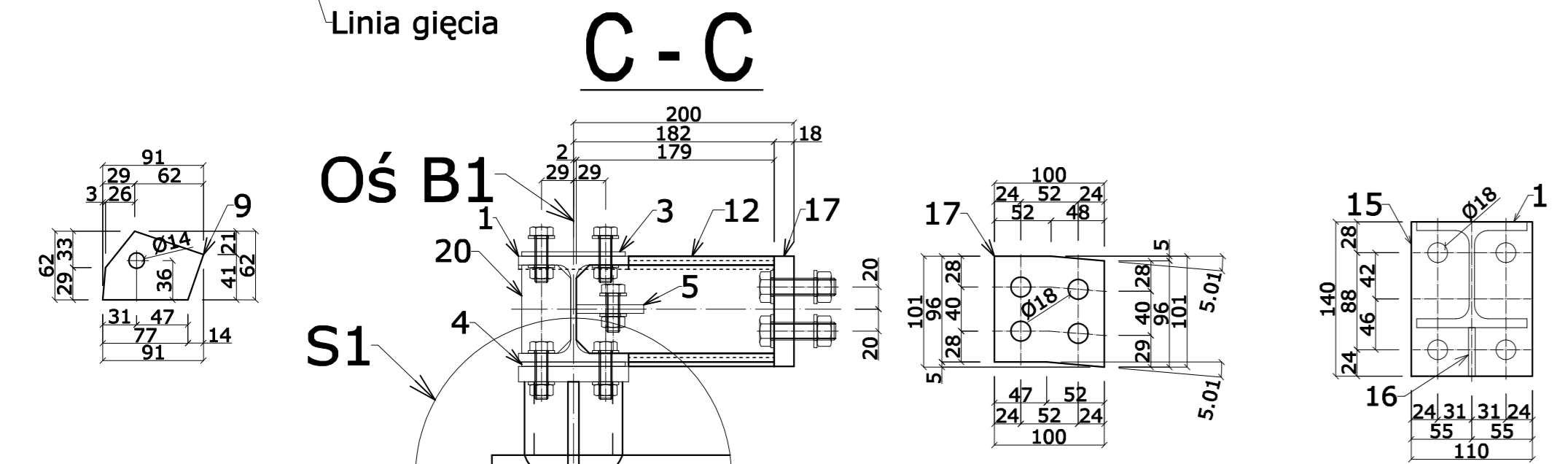
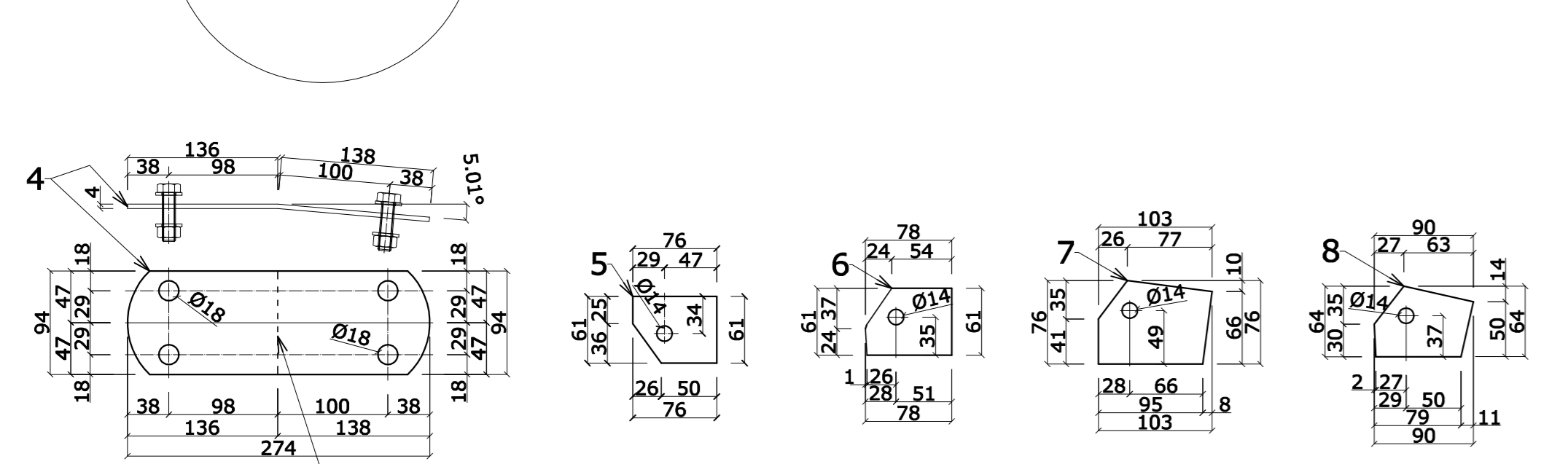
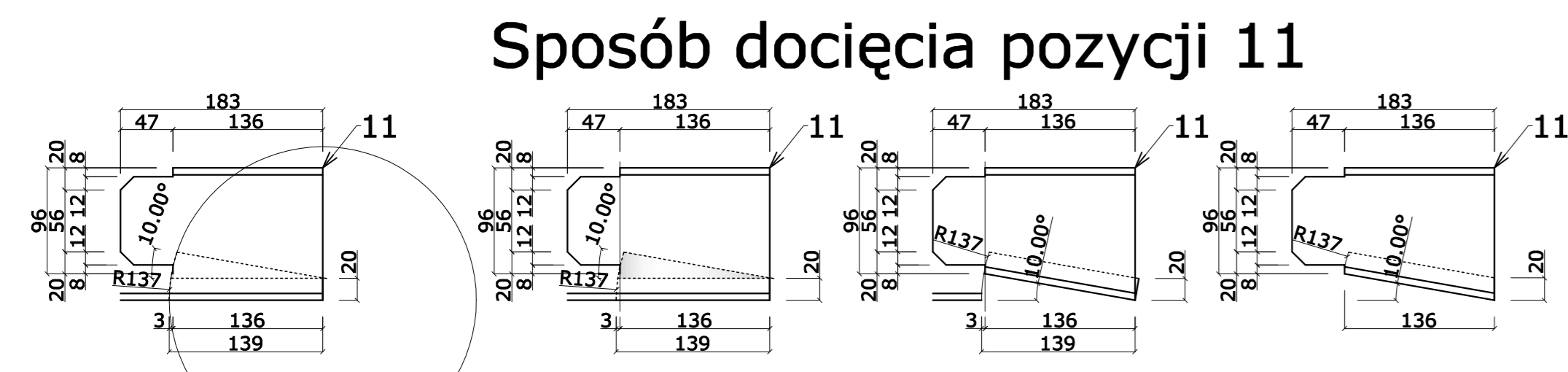
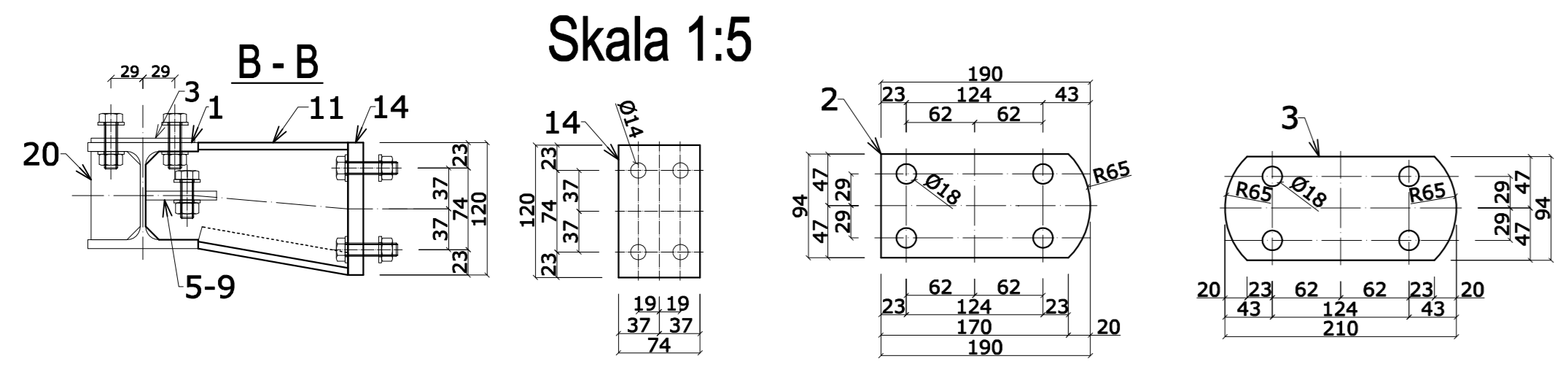
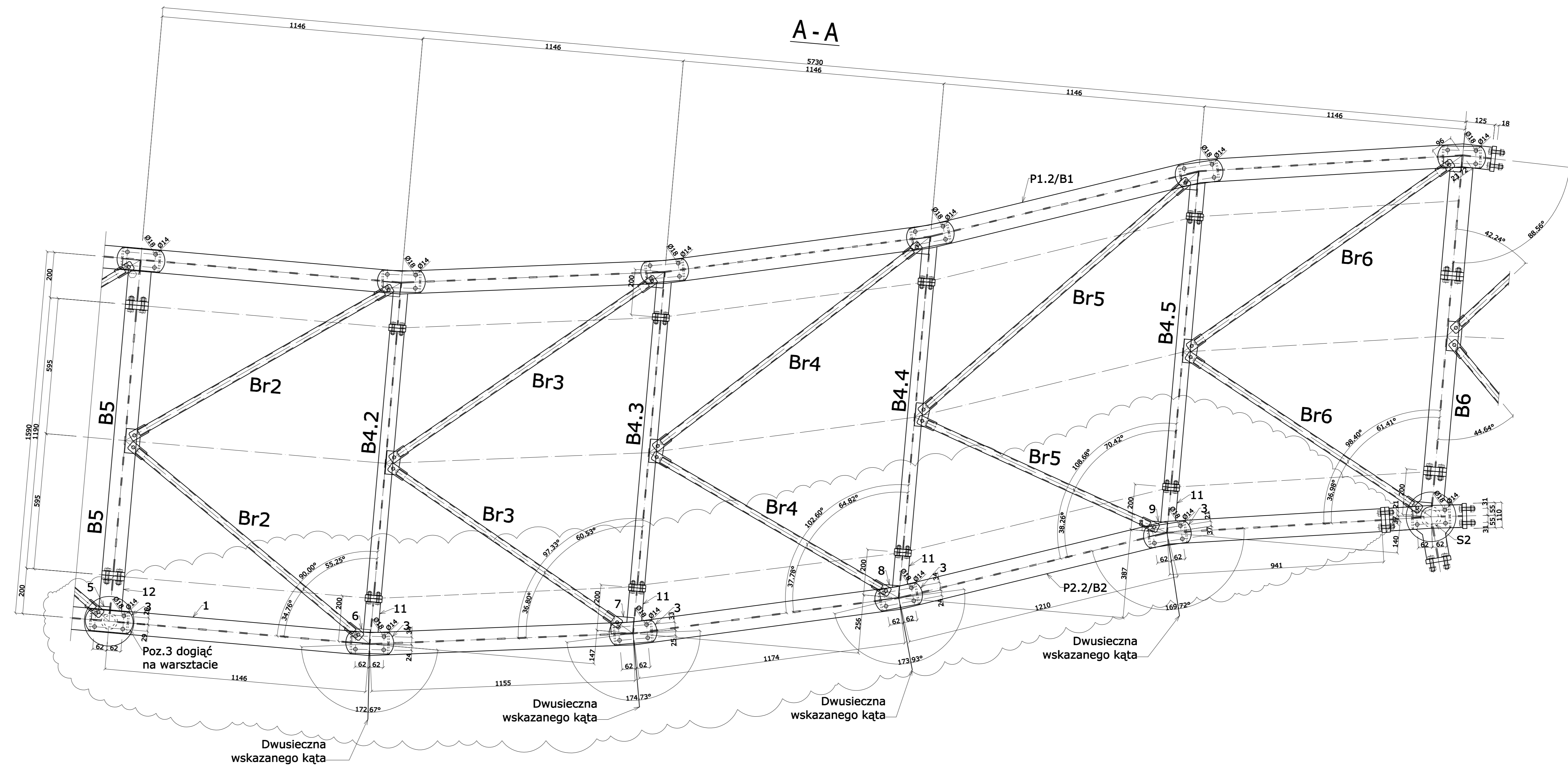
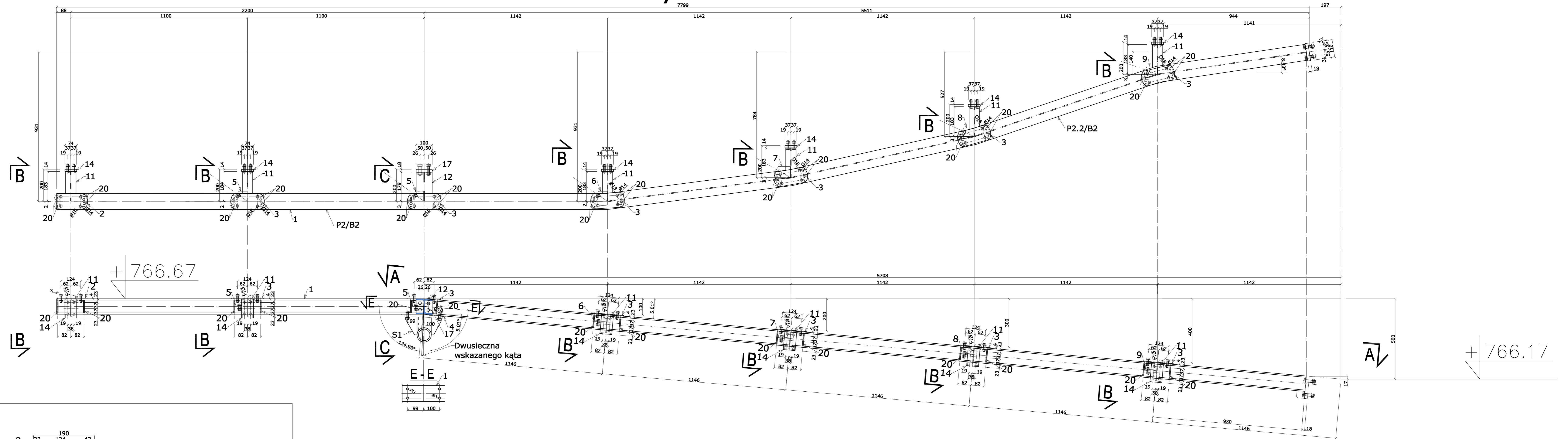


B2 wykonać x 1



WYKAZ STALI dla Belki B2

Lp.	profil	dlugość	rozst.	ciężar	staj
1	HEA100	769	1	16,67	130,66
2	bl 4x44	190	1	2,95	0,56
3	bl 4x44	210	4	2,95	11,72
4	bl 4x44	274	1	2,95	0,81
5	bl 8x63	78	2	3,83	0,58
6	bl 8x63	78	1	3,83	0,29
7	bl 8x63	103	1	4,77	0,49
8	bl 8x64	90	1	4,52	0,36
9	bl 8x62	91	1	3,90	0,35
11	HR230	183	6	10,38	11,58
12	HEA100	179	1	16,67	4,98
14	bl 14x74	120	6	8,13	5,85
15	bl 18x110	140	1	15,50	2,17
16	bl 8x60	50	1	2,81	0,13
17	bl 18x100	101	1	14,10	1,42
18	bl 6x44	80	28	2,07	4,64
19	bl 6x44	80	28	2,07	4,64
20	bl 6x44	80	28	2,07	4,64
				Razem	166,19
				+1,8% dodatek na spoiny	2,99
					170,9g

WYKAZ ŁĄCZNIKÓW

śruba HV PEINER M12x50 (est. 28) kl.10.9	1,53
nakrętka HV PEINER M12 (est. 28) kl.10	1,37
poślinka M12 (est. 60)	0,31
śruba HV PEINER H100x5 (est. 80) kl.10.9	1,16
nakrętka HV PEINER M18 (est. 8) kl.10	0,27
poślinka M16 (est.16)	0,18
Razem 3,86g	